

Greyhound Racing Victoria

# REGULATORY APPROACH

*2019 - 2020*





I am very pleased to deliver GRV's updated Regulatory Approach for 2019 – 2020 and I would like to thank the team at GRV for building on their previous work in establishing the principles on which GRV will seek to regulate the greyhound racing industry. I would also like to thank Victoria's greyhound racing participants and our stakeholders for their positive and open dialogue with GRV, across a number of platforms, which has helped inform this Regulatory Approach.

GRV will embed the framework outlined in this regulatory approach to guide its decision-making and reforms. By committing to a Regulatory Approach, GRV increases its transparency as to how and where GRV will be focusing its compliance efforts.

This updated Regulatory Approach is also a continued commitment to participants that GRV will seek to regulate in a proportionate way that reflects risk and will work with participants to implement reforms and put any new regulatory structures in place.

Greyhound Racing is a community sport where most participants not only comply with the regulatory structure but also strive to make improvements where they can. I am confident that participants will embrace the regulatory approach articulated here and will continue to work with GRV for a strong and sustainable sport into the future.

Thank you,

Peita Duncan  
Chairperson  
Greyhound Racing Victoria



Greyhound Racing Victoria (GRV) is responsible for controlling and promoting the sport of greyhound racing through a legislative framework that puts the welfare of greyhounds first and foremost. To do this effectively requires a robust, flexible and proportionate regulatory regime that gives all participants the necessary confidence in the sport as fair, transparent and accountable while also being able to properly comply with the standards, policies and rules set by GRV.

GRV's Regulatory Approach is based on

contemporary regulatory theory, Government policy, the need to meet relevant legislation, and community expectations.

This approach is driven by the overarching priorities of animal welfare and strong integrity management.

GRV is also committed to ensuring that participants are not disadvantaged by the few who choose to do the wrong thing and damage the sport.

Fundamental to our approach is strong risk-based regulation focused on participants, premises and all phases of the racing greyhound's lifecycle.

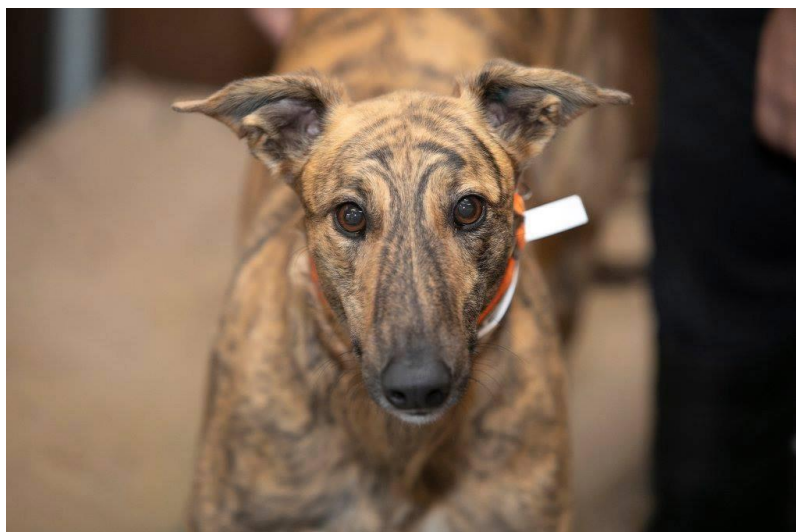
We will work together with participants and all other stakeholders to achieve positive outcomes for the sport, the greyhound racing community and most importantly for the greyhounds themselves GRV will also be consistent in taking prompt and strong enforcement action against those in the sport who don't comply with their obligations.

We have had significant input in developing this regulatory focus, and industry reform in general, from our participants and other stakeholders through various input from our key stakeholders through many forums, committees and consultation processes held over the past year.

The overwhelming majority of greyhound racing participants have made it clear it they want to be part of a trusted and respected sport with a strong and sustainable future. We will continue to work closely with them and all other stakeholders to achieve this by delivering best possible outcomes for the welfare of the dogs and the integrity of the sport while sharing our pride and passion for greyhound racing.

Alan Clayton  
Chief Executive Officer  
Greyhound Racing Victoria

# GREYHOUND RACING VICTORIA



GRV regulates the sport under the *Racing Act 1958* (Act), which includes setting standards and ensuring they are met by participants.

GRV must do this in a way that meets its legislative obligations under the Act and Community and Government expectations while also fostering a positive relationship between GRV and participants. GRV's regulatory approach aims to achieve this by building a strong culture of voluntary compliance across the sport.

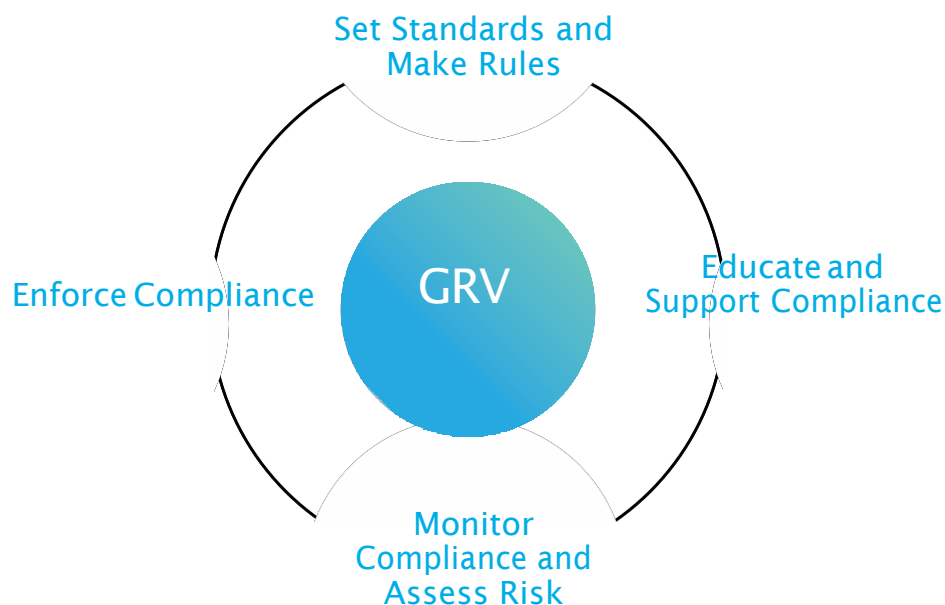
This means ensuring that all participants fully understand their responsibilities for the greyhounds they breed, own, train and race, are supported by continually improving husbandry and training techniques and are committed to the welfare of their greyhounds from birth to retirement to rehoming.

GRV's updated regulatory approach for 2019 – 20 will continue to provide the direction for significant cultural and operational change to deliver these outcomes.

GRV's overarching regulatory principles are

- Regulatory necessity – GRV aims to regulate greyhound racing in Victoria only as much as is necessary to protect the welfare of greyhounds and the integrity of the sport

- Reflecting risk - GRV focuses on risk as a guide for GRV's decision-making, priority setting, and use of resources in discharging GRV's statutory functions to control and promote the sport of greyhound racing
- Information & education – GRV actively focuses on ensuring industry participants fully understand their responsibilities and are in the best position to fully comply with their obligations
- Proportionate regulation - while GRV's preference is to guide, educate and support participants to better understand and comply with their obligations, GRV will proactively monitor compliance and actively pursue enforcement action as appropriate to address non-compliance



A copy of our Minister's statement of expectations for GRV can be found at [www.grv.org.au](http://www.grv.org.au).

# REGULATORY OBJECTIVES



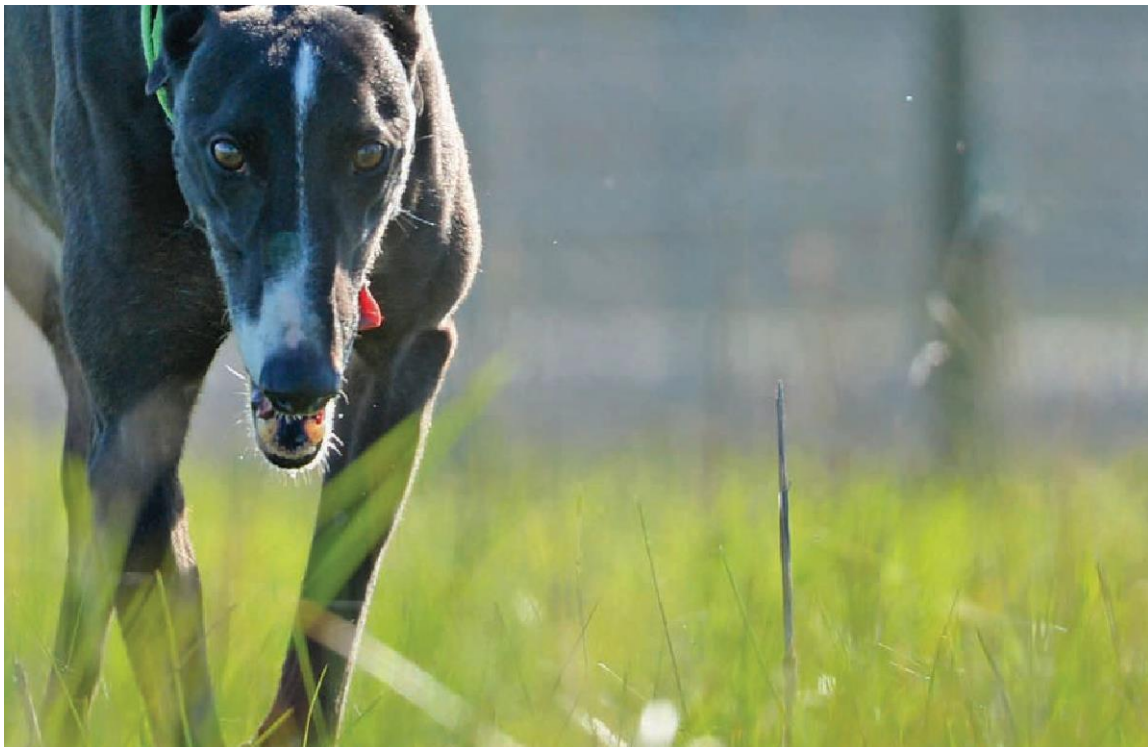
Terrie Benfield – General Counsel

At its core, GRV’s regulatory approach is risk based and committed to the welfare of racing greyhounds, both on and off the track.

GRV also acknowledges the growing importance of building participant confidence to engage in the sport while complying with the standards, policies and rules set by GRV. A culture of voluntary compliance within the sport will enable a significant proportion of compliance resources to be directed toward education and engagement rather than penalty-based enforcement.

To help participants improve their compliance practices, GRV will set clear expectations about acceptable standards for greyhound welfare and provide further opportunities for training, education and guidance.

Fundamental to GRV’s strategic priorities is a healthy, resilient, sustainable and prosperous sport with greyhound welfare at its core.





GRV balances the following regulatory objectives:

- Ensure the welfare of racing greyhounds and prevent the mistreatment of animals associated with the sport of greyhound racing
- Ensure that greyhound racing venues remain free from criminal influence or exploitation
- Foster voluntary compliance to provide all participants with the necessary confidence to participate in the sport of greyhound racing while complying with the standards, policies and rules set by GRV
- Facilitate the development of greyhound racing clubs that reflect community expectations and contribute to the local community
- Ensure that practices that could undermine public confidence in greyhound racing are eliminated
- Reduce red tape and cost impacts on businesses and industry participants
- Ensure GRV is transparent about its procedures, decisions and actions
- Through the regulation of greyhound racing, promote employment and economic development in Victoria



# REGULATORY FOCUS FOR 2019 - 2020



GREYHOUND RACING VICTORIA - REGULATORY APPROACH

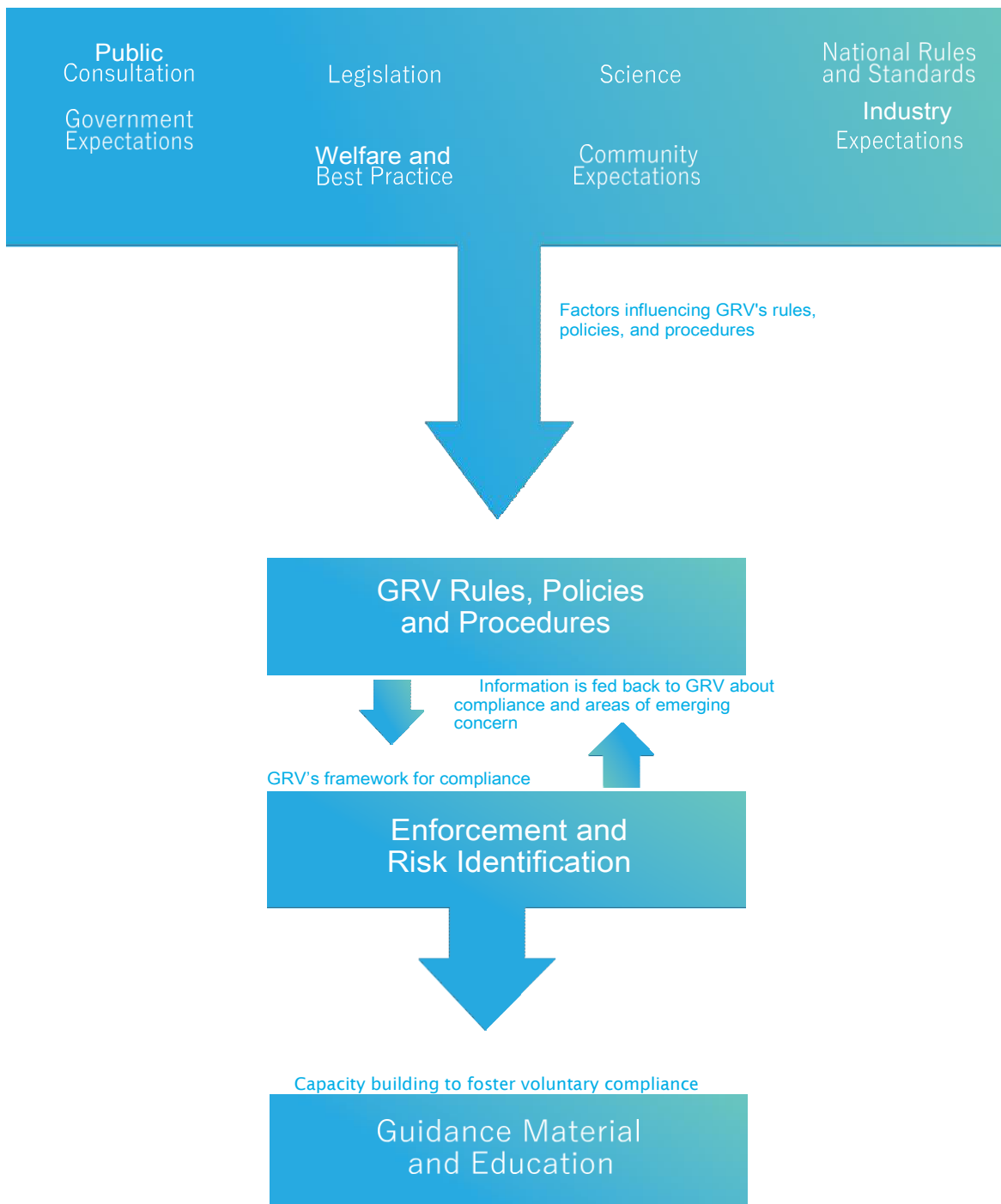


GRV's risk-based approach requires agile regulatory responses to participants with poor compliance profiles. To address this, in 2019–2020 GRV will focus on:

- Registrations – working to ensure only suitable people are registered with GRV and engaged in greyhound racing in Victoria
- Enforcement – enhancing GRV's enforcement capability and capacity

- Compliance and Education – making training and educational material more accessible to participants

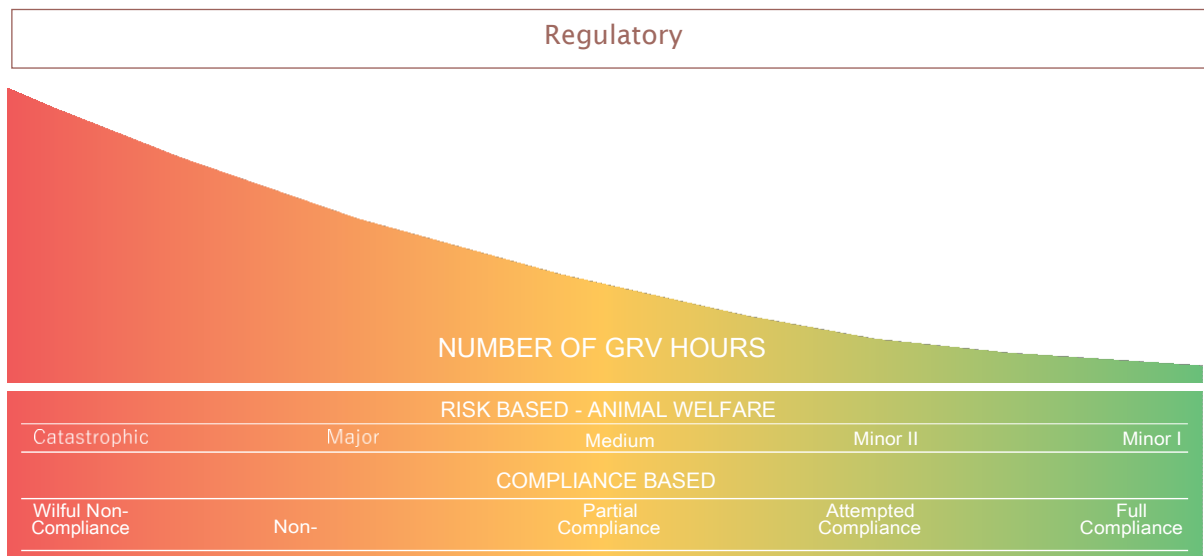
GRV will also continue to review its existing rules, policies and procedures to ensure clear and enforceable rules and modern policies with clear expectations that are understandable and achievable.



# Risk Management

GRV applies a risk based approach to compliance and enforcement to help direct its resources appropriately. The assessment of risk is based upon consideration of the likelihood and wilfulness of non-compliance combined with the actual or potential harm caused to the welfare of a greyhound. The adoption of a risk-based approach provides GRV with a structured framework to identify, analyse, prioritise and respond to risk.

Regular monitoring of regulatory risk enables GRV to adjust its strategies, and enforcement activities, to reflect the changing priorities that result from identifying new and evolving regulatory threats and changes in community expectations. GRV acknowledges that a tolerance of risk is necessary to properly meet its regulatory objectives.



## GRV

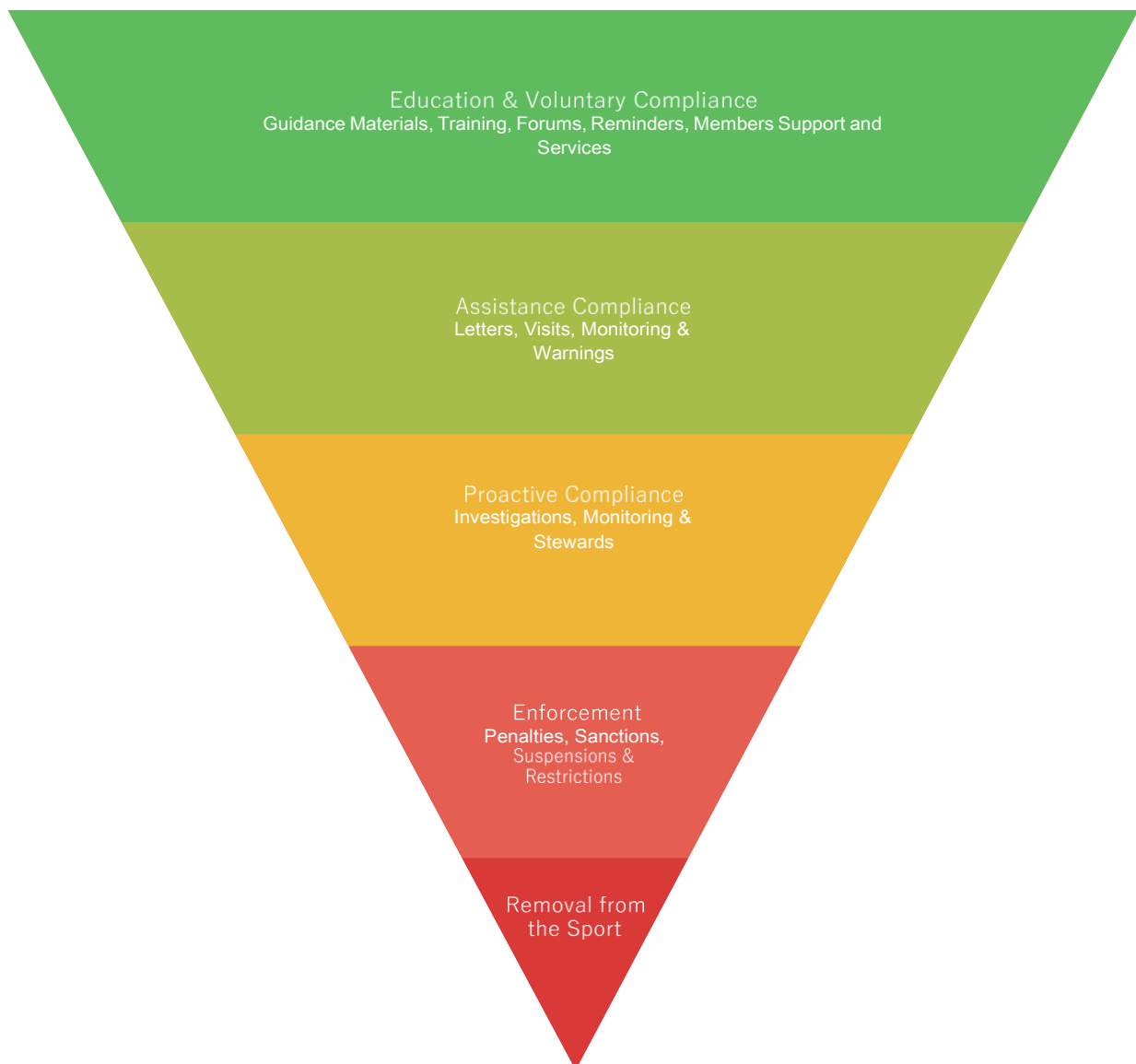
- Strives for a consistent approach to the assessment of risk throughout our operations
- Asks for input on risk assessments from other relevant government agencies, including Victoria Police, the RSPCA and local government to ensure we use all relevant data, information and intelligence
- Uses information and data in risk assessments
- Scans for emergent or unfamiliar risks to enable us to take a proactive approach to regulation
- Uses legal, economic, policy and other forms of analysis in addition to risk assessments to guide our decision-making
- Works to coordinate its risk management activities with other government regulatory partners, where appropriate
- Regularly reviews and updates its risk assessments and risk management practices to reflect changes in the sport of greyhound racing, regulatory objectives, and the availability of new data and information

## Education

GRV recognises that the most important aspect of its regulatory framework is not sanctions, but rather voluntary compliance. Education is a major contributor to a culture where compliance is voluntarily given by participants, rather than forced by way of compulsion and sanction.

The education component of GRV's regulatory framework has four main goals:

- Ensure the welfare of greyhounds and the integrity of the sport of greyhound racing
- Provide accessible information to assist participants to engage greyhounds with best practice
- Build capability and understanding of participants to meet their obligations
- Provide clear and easily understandable information to encourage voluntary compliance, which in turn creates higher quality compliance at a lower cost





## Enforcement

GRV has established a working agreement with the Victoria State Government Department of Jobs, Precincts and Regions to appoint Authorised Officers and Inspectors under the *Domestic Animals Act 1994* and the *Prevention of Cruelty to Animals Act 1986*. The Establishment of this agreement provides GRV Inspectors with specialist powers under the Act to enforce sections of the Legislation and ensure that greyhound welfare is the highest priority to all industry participants.

The *Racing Act 1958* was updated in August 2019 to include the introduction of the new Victoria Racing Tribunal (VRT) and the establishment Victorian Racing Integrity Board (VRIB).

The Victoria Racing Tribunal (VRT) has jurisdiction in all three racing codes for matters and offences of a serious nature, VRT also has jurisdiction to hear appeals in relation to decisions from Stewards and other offences.

The integrity functions of GRV and the other two racing codes will now be overseen by the newly created Victorian Racing Integrity Board (VRIB). VRIB is an independent, cross-code integrity board established to ensure racing integrity in Victoria and provide enhanced integrity framework for the Victoria Racing Industry.

Integrity and animal welfare are at the forefront of GRV strategic policies, and the introductions of VRT and the establishment of VRIB

will provide significant support and framework in assisting GRV to meet strategic outcomes, monitor participant compliance and education and meet community expectations.

The aim of GRV's enforcement regime is to encourage individuals to choose to comply with their obligations. Whilst the vast majority of participants in the sport of greyhound racing are responsible and endeavour to achieve or go beyond their obligations, there will be occasions where some participants fail to meet these obligations.

### Monitor

GRV monitors the activities of the sport of greyhound racing to detect where individuals and businesses are not complying with their regulatory obligations.

GRV's aim is to identify problems in the sport of greyhound racing that put the achievement of regulatory objectives at risk. GRV's monitoring approach is characterised by flexibility, responsiveness and the use of intelligence. GRV collaborates with regulatory partners, especially Victoria Police, the RSPCA and local councils to gather an in-depth understanding of the sport of greyhound racing.

## **GRV**

- Has a targeted monitoring program informed by risk assessments with a particular focus on the protection of animal welfare
- Conducts random audits and inspections
- Looks to identify trends or emerging issues in the sport of greyhound racing

GRV uses face-to-face inspections as an opportunity to remind those involved in the sport of greyhound racing of their obligations.

## **Enforce**

If GRV finds that a participant is not compliant, then action is taken to bring the participant back into compliance with their obligations. This may mean providing an opportunity for the participant to voluntarily fix the problem, or taking sanction based enforcement action.

The three critical elements to our targeted enforcement approach are:

- Systemic, fairly directed and fully explained disapproval of those who do not comply with the rules
- A respect for individuals and businesses regulated by GRV, by taking into account individual circumstances
- An escalation of the severity of enforcement sanctions in the absence of genuine effort to meet required standards.

## **Penalties**

GRV's administration of penalties is underpinned by four Principles – Impartiality, Transparency, Effectiveness and Enforceability.



Shane Gillard – General Manager, Greyhound Racing  
Integrity Unit

## Impartiality

- Equality – all participants are treated fairly and penalties consider wilful noncompliance, prior history and impacts on animal welfare
- Proportionality – penalties reflect the impact of noncompliance on integrity, welfare, reputation, participant confidence, and undue racing advantage
- Procedural fairness – everyone has the same opportunities to explain the circumstances of their alleged offence

## Transparency

- Ease of understanding – participants understand what is expected and the consequence of non-compliance
- Consistent – penalties are imposed at consistent levels and discretion is used in similar circumstances
- Clarity – decisions and the reasons for decisions, are easily understandable and made on clear principles of good governance and regulation

## Effectiveness


- Voluntary compliance – penalties operate as a means of encouraging compliance
- Welfare focused – penalties contribute to the protection and the welfare of greyhounds
- Confidence – participants are confident that they will not be disadvantaged by complying with the rules
- Balanced – penalties are severe enough to encourage compliance but not so severe as to be difficult to enforce or perceived by participants as disproportionate

## Enforceability

- Clear – easy to enforce and to apply appropriate penalties
- Discretion – the circumstances in which the exercise of discretion is appropriate are distinguishable
- Administration – easy to administer and does not create undue burden on either participants or GRV
- Circumstance driven – can have regard to circumstances of recklessness or wilful non-compliance







Greyhound racing has a strong base of participants who will always work for the betterment of the sport.



**GREYHOUND RACING VICTORIA**

46-50 Chetwynd Street,  
West Melbourne, VIC  
3003 T: (03) 8329 1100  
F: (03) 8329 1000  
E: [admin@grv.org.au](mailto:admin@grv.org.au)

[grv.org.au](http://grv.org.au)

[gap.grv.org.au](http://gap.grv.org.au)

[fasttrack.grv.org.au](http://fasttrack.grv.org.au)

[greyhoundcare.grv.org.au](http://greyhoundcare.grv.org.au)